

D-Sub Plastic Grip Cap, Top Entry

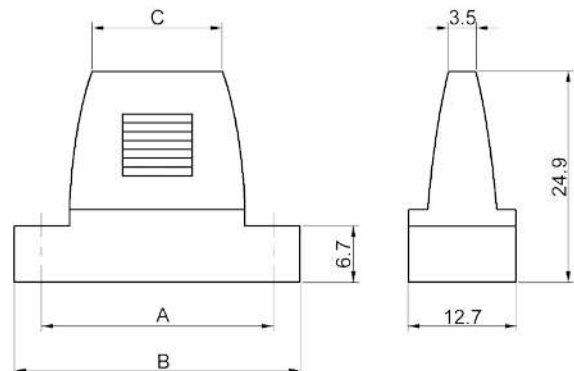
TECHNICAL SPECIFICATIONS

Material: ABS Plastic, UL 94 HB
 Operating Temperature: -25°C to +85°C
 Cable Entry: Top / Individual Wire Entry
 Jackscrews: UNC 4-40



Features:

- Supplied with Female Screw-Locks
- Suitable for Solder Cup D-Sub Connector only



| Size DFCC | Dim A | Dim B | Dim C |
|-----------|-------|-------|-------|
| 9-way | 25,0 | 32,0 | 15,5 |
| 15-way | 33,4 | 40,0 | 22,2 |
| 25-way | 47,0 | 53,7 | 36,0 |

Ordering information:

| Size: | P/N - Kitted: | Product Code: |
|--------|---------------|---------------|
| 9-way | 1520-0201-01 | DFCC09-P |
| 15-way | 1520-0201-02 | DFCC15-P |
| 25-way | 1520-0201-03 | DFCC25-P |

